

# MODEL A BRAKE INSTALL INSTRUCTIONS

1. Remove the old brakes from the Model A



2. The MT kit comes with everything you'll need except for the hydraulic lines and the emergency brake cable. Those can be purchased at Moose Motors and Control Cables.



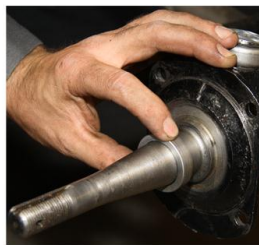
3. Once all of the old brake parts have been removed, you can either use a hand saw or an angle grinder with a cut off wheel to remove the "ball" from the kingpin



4. Place the backing plate up to the spindle, the backing plate will hit along the top of the spindle. Use an angle grinder with a sanding flap wheel to trim the top of the spindle until the backing plate mounting surface fits flat against the spindle



5. Take the spindle adapter ring and place it onto the spindle with the inner beveled edge facing the backing plate. You may need to press it on with a small piece of pipe and a hammer.



6. Install the backing plate and all of the internal parts. Place the hubs on the spindles and then the drums to ensure everything is fitting properly. The front brake parts can now be painted.

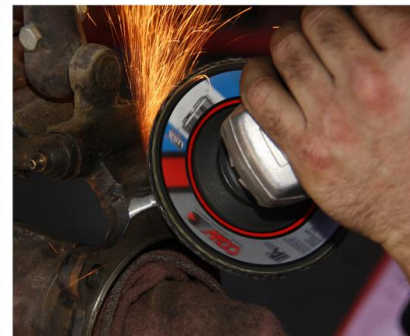


## REAR BRAKES

1. Remove all the rear brake parts.



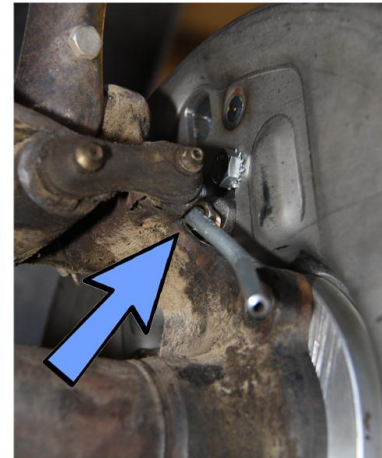
2. Place the "D" shaped spacer between the rear axle and the backing plate. The backing plate will touch the top of the axle where the spring perch is. Take the angle grinder with the sanding flap wheel and sand the casting until the backing plate fits.



3. You only need to take off enough casting to allow a piece of paper to pass between the backing plate and axle.



4. Next you'll need to notch the spring hanger for the brake line. Using the same flap wheel simply notch the casting for the brake line.



5. Now that the backing plate and the lines clear, install the backing plate and the internal parts (as per the included instructions) for a test fitting. Install the hubs and drums for test fitting. Install the emergency brake cable too. Once that is completed the parts can be painted.

